

# **SPACE AS A SOLUTION TRANSFORMING CHALLENGES INTO OPPORTUNITIES**

Space as a Solution service leverages cutting edge technology, industry expertise and a robust infrastructure to deliver impactful solutions across various sectors.

## **Powered by Plan-S**

Plan-S approaches space not as a frontier, but as a strategic platform for solving global challenges.

### ► **Why Plan-S?**

#### **Pioneers in New Space**

Founded in 2021, Plan-S embodies the entrepreneurial spirit of the New Space era. As an innovator in IoT and Earth Observation, which has already launched seventeen satellites, laying the foundation for transformative constellations.

### ► **Terrestrial Challenge Resolution Through Plan-S' Space Technology Portfolio**

The company develops advanced space technologies to overcome Earth's most pressing challenges, ensuring efficiency, reliability and innovation at every stage.

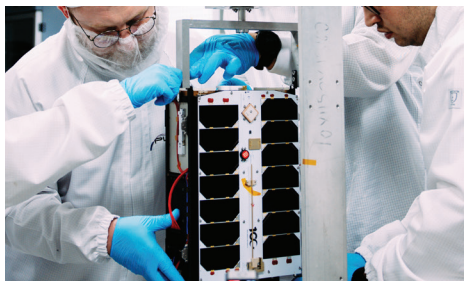
### ► **Unlocking the Future with Space**

Plan-S' Space as a Solution approach centers on Earth Observation and IoT communication satellites, designed for diverse applications. Through its capacity building programs, Plan-S supports the transfer of critical skills needed to develop and sustain space capabilities for the next generation of experts.

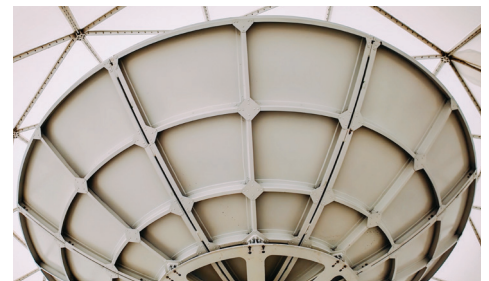
Additionally, services for the launch phase and in country ground segment solutions enable seamless integration empowering nations & enterprises to fully realize the potential of satellite technology in achieving their strategic objectives.



► **Launching**



► **Satellite**



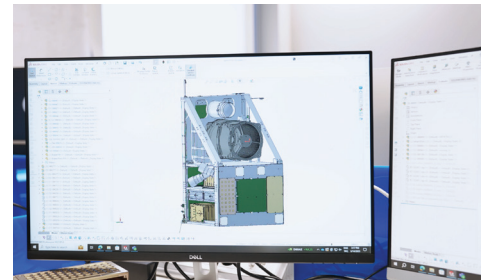
► **Ground Station**



► **Control Room**



► **Capacity Building**

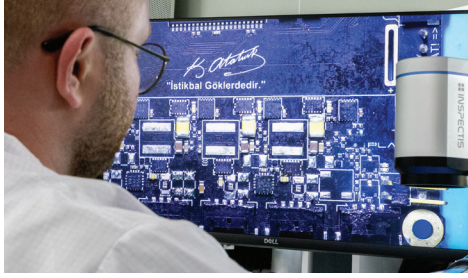


► **Early Operation**



## ► Plan-S Infrastructure: A Foundation of Excellence

### State-of-the-Art Testing & Assembly Centers



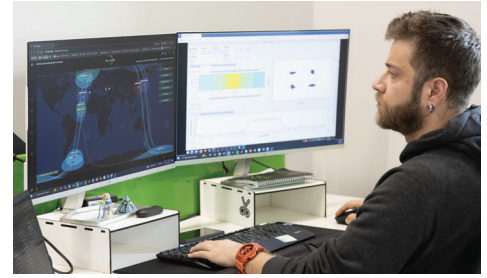
Prototyping and mass production cleanrooms (10.000/ISO 7 & 100.000/ISO 8), advanced thermal vacuum chambers and specialized labs for comprehensive satellite testing.

### Extensive Ground Station Network



With a total of 8 ground stations, the widely distributed network ensures seamless satellite communication through flexible, cloud supported data management.

### Integrated Software Systems

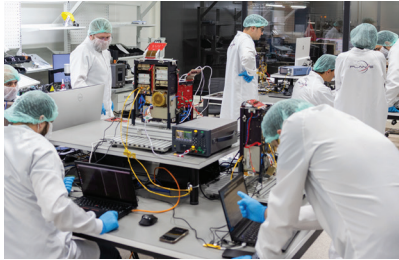


Integrating software systems equipped with intuitive tools that simplify satellite operations, enhance data visualization and enable seamless telemetry and telecontrol, ensuring efficiency and precision in every mission.

## ► Core Capabilities: Comprehensive Solutions

### Satellite Design & Manufacturing

Customized satellites designed and produced for unique mission requirements, ensuring reliability and precision.



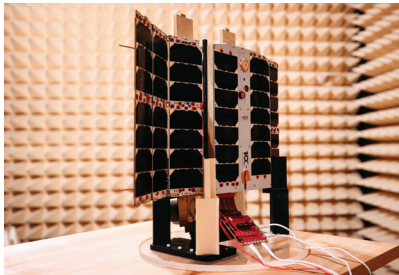
### Payload & Platform Integration

Integration of advanced payloads, such as inter-satellite links and optical systems, to enhance mission efficiency.



### Comprehensive Testing Facilities

Equipped with thermal vacuum chambers, vibration testing systems, ISO-certified cleanrooms to ensure the highest quality standards.



### Ground Station Operations

A global network of strategically placed ground stations guarantees seamless communication and data transmission.



### End-to-End Expertise

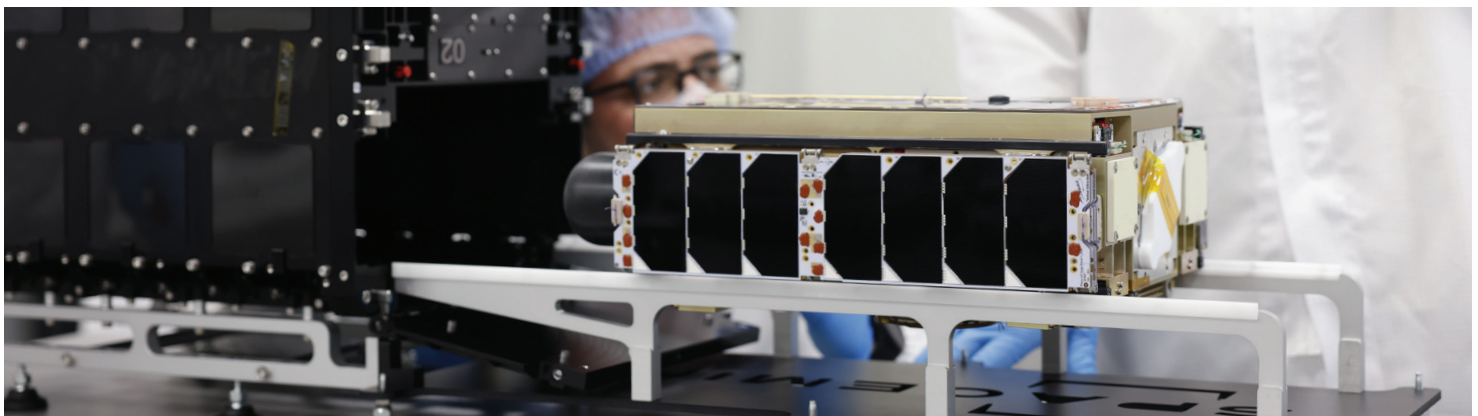
From concept and launch planning to operation, Plan-S provides complete lifecycle support for every satellite mission.



## ► Redefining Possibilities Through Space Innovation

Through its Space as a Solution initiative, Plan-S is unlocking new opportunities, driving innovation and setting new standards for the future of space enabled services. Elevate your mission contact Plan-S today to explore partnership opportunities.

[business.development@plan.space](mailto:business.development@plan.space)



[www.plan.space](http://www.plan.space)



[weareplans](https://www.linkedin.com/company/weareplans)



[WeArePlanS](https://twitter.com/WeArePlanS)



[weareplans](https://www.instagram.com/weareplans)



[WeArePlanS](https://www.youtube.com/WeArePlanS)